

# Installation Instructions

## Factory Flap Style

**RUFF TUFF**  
AMERICA'S FINEST CUSTOM SEAT COVERS

### IMPORTANT NOTES

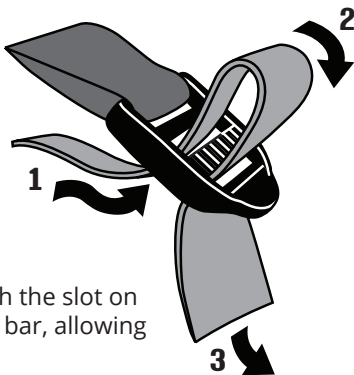
- If you have any questions or issues during installation, **call customer service for additional help** at 800-453-8830 (US only) or **801-972-5845**.
- Seats vary greatly according to vehicle make, model, trim, and year. These instructions are as broad as possible, but **you may notice some differences in your specific vehicle**. Call if you need assistance.
- Whenever possible, these seat covers are designed to be installed while the **seats are in the vehicle**, with the covers **tucking behind your original plastic panels**.



Installation videos available at  
[YouTube.com/@RuffTuffProducts](https://www.youtube.com/@RuffTuffProducts)

### BUCKLE USE

- 1 Thread the strap from behind the buckle out through the center opening (next to the grooved bar).
- 2 Pass the strap across the grooved bar.
- 3 Thread the strap back through the slot on the other side of the grooved bar, allowing the strap to be pulled tight.



Lift up on the rounded front tab of the buckle to loosen for removal.

**Warning:** You must not obstruct the side impact air bags. If your seat has side impact air bags and your seat cover has not been properly modified either with Velcro or a cutout, **DO NOT INSTALL** this cover. It could interfere with the deployment of the side impact air bags. Please call the company at 800-453-8830 or 801-972-5845 for more information. We will make the necessary modifications to accommodate for air bags.

**Warning:** On some new vehicles there may be an option for Active Headrests with a wire running into the headrests. These headrests are not designed to be removed, and allowances should have been made to allow installation of the seat covers without taking off these headrests. If no allowances have been made and you have Active Headrests with the wire running into the headrest, be sure to let us know so we can fix your seat covers.

**Warning:** The National Highway Traffic and Safety Administration recommends that passengers under the age of 12 not travel in the front seat of a motor vehicle. The National Highway Traffic and Safety Administration also requires new light-duty vehicles to be equipped with advanced airbag sensors that detect a front passenger's body weight. In case of a frontal crash, if a front passenger's body weight is less than 70 pounds, a sensor deactivates the airbag deployment to avoid causing death or serious injury that may result from the force of an airbag deployment.

The extra weight of an aftermarket seat cover may be detected by an advanced airbag sensor as part of a passenger's body weight. This extra weight could cause an airbag to deploy in case of a frontal crash if a person's body weight is slightly less than 70 pounds because the sensor may add the aftermarket seat cover's weight to that of the passenger's and thus assume that a front passenger's body weight is actually more than 70 pounds. A front passenger airbag may cause death or serious injury to a person who weighs less than 70 pounds.

### A Front Bucket/Bench Seat Bottom(s)

**Note:** Be careful to check all pieces. The driver and passenger sides on buckets may be opposites or slightly different. The driver side pieces will be labeled. Also **never attach to or tie around wires under seat**.

1. On the backside of the seat bottom is a factory flap of material (carpeted or plastic) that is attached to the underside of the seat with elastic bands. Reach under the seat, find where the elastics are attached to the seat, and detach them. (They may have plastic clips or be looped around the metal springs that support the cushion.)

Some models may have a plastic rivet or be attached to the air bag wiring connector/bracket. **You will not need to detach this type of flap** to install the covers.

2. Lay the lower cushion cover over the seat bottom and push the straps or buckles and back edge through where the seat bottom and backrest meet.
3. Grab the back edge of the seat cover and pull back until the front corners and seams are properly aligned on the seat.
4. On some vehicles, a center strap is used as an anchor. From behind the seats, loop this anchor strap around the support springs or frame and return to the buckle attached to the strap's base. Where possible, keep the strap above any electrical mechanisms or wires under the seat. Never attach straps to wires or electrical components. Cinch tight. This will keep your seat cover from shifting forward over time.
5. Feed the outer straps under the seat towards the corresponding buckles. Whenever possible, go above all electronics, wires, and metal bars. Thread the straps through their matching buckles and tighten. (Some models may have Velcro instead of the outer 2 straps. If applicable, just pull the back edge tight and attach the Velcro to the existing carpet.)

6. Tuck excess strap material above the tightened straps to keep it out of the way.
7. If you have electric seat controls on the upholstery of the seat, there will be cutouts provided. For a clean look, tuck the opening around the plastic panel, if possible.
8. If there is a plastic trim panel around the base of the seat, tuck the side skirt of the seat cover behind the top edge of the plastic, if possible. See Photo A opposite side.
9. If the bottom edge of the seat cover has a drawstring, run this drawstring in the tightest path possible around the seat, which may include going behind some of the plastic molding at the base in places. Most models fit better if you take the drawstring under the seat to tie it off. When this is not possible, take it around the back of the seat instead.

**Make sure to avoid any sharp edges that may damage the string, and stay clear of the seat tracks.** Call if you'd like help deciding a path that is best for your model.

Run the un-looped end of the string through the looped end. Cinch to tighten. Pinch the string to hold it in place and tie off in a knot. (Using a slip knot will make it easier to remove from the cushion in the future.) Tuck excess string out of the way.

*If you have adjustable headrests or lumbar supports on the backrest or seat cushion, cutouts are provided.*

## B Front Bucket/Bench Backrest(s)

**Note:** Be careful to check all pieces. The driver and passenger sides on buckets may be opposites or slightly different. The driver side pieces will be labeled. **BE SURE ANY SEAT-MOUNTED AIRBAG ACCOMMODATIONS IN THE COVERS MATCH AIRBAG LOCATIONS ON YOUR SEATS.**

**Warning - If you have active headrests with the wire running into the headrests, DO NOT remove the headrests. Accommodations have been made for non-removable headrests. Contact us if this has not been done.**

1. Remove the adjustable headrests before installing (see Section C below for removal details). Line up the top of the seat cover with the top of the seat, and pull the cover down on the seat a little at a time. This will ensure a smooth, snug, and straight fit. If your seats have seat-mounted airbags, open the overlapping Velcro flap (door-side of seat) before sliding the cover over the backrest.
2. If the headrests are removable, tuck the fabric under the plastic headrest housing using the provided installation tool. See Photo B below.
3. Push the flap with felt on the end of it through the gap where the backrest and bottom meet.
4. Reattach Velcro tabs for the airbag flap (if applicable) and then manipulate the cover so that the seams are aligned to match the original seat. If necessary, tighten and re-seal the Velcro.
5. From the back side of the seat, pull the felt flap towards you until you have a snug fit on the front of the backrest. Then seal it to the strip of hook/hard Velcro sewn on the back edge of the lower seat cover.
6. Reattach factory flap from Section A (step 2) and attach Velcro tabs to back of flap. (Some models may have elastics on the back of the seat cover which will hook around the springs under the seat).

## C Headrest Removal/Installing Covers

1. Most vehicles with adjustable headrests have release buttons or small pinholes at the base of the post on the plastic housing. Depressing the buttons will release the headrests so they can be removed. (Some buttons are flush with the side of the plastic housing.) If it has a pinhole you can use a paperclip or small Allen wrench to depress the button inside of the housing. If both plastic housings have buttons/pinholes, these must be pressed at the same time to remove the headrest. If you cannot locate a button or pinhole, it may be located below the plastic housing, beneath the upholstery.
2. In most cases, the headrest cover will have the flap with hard/hook Velcro at the front of the headrest, and the flap with loop/soft Velcro will wrap from the back. Once you have identified the correct placement, install the cover by squeezing the headrest to make it smaller as you slide the cover over it. Keep the seams lined up with the upholstery seams as you go to make this easier. Be careful not to split the seams.
3. Pull the front and back flaps together and connect the Velcro pieces. Some headrest covers will have elastic around the bottom instead of Velcro.

## D Armrest Covers

1. Slide the cover over the armrest. To get a perfect fit, make sure the seams of the armrest cover match up with the seams of the armrest upholstery. Once the seams are aligned, seal the Velcro closure on the back side of the armrest, if applicable.

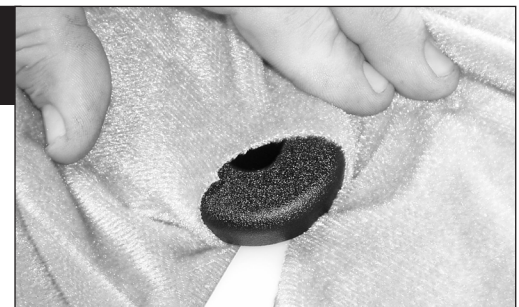
## E 40/20/40 Front Seat

1. Install the 40 sections and headrests using the steps in Sections A, B, and C.
2. Remove headrest from 20 section, if applicable. With the 20 section backrest/console in the folded down position, open the lid of the console and attach the lid cover. It will either have Velcro straps side-to-side or will be an envelope-type sleeve that you will slide over the lid. Most vehicles will have a strip of loop/soft Velcro sewn along the back edge of the lid (depending on model).
3. Install the main body of the console/backrest cover. The front edges should slightly cap over the front edge of the console, and the back edge of the cover should have a strip of hook/hard Velcro sewn onto it that you will attach to the Velcro on the back edge of the lid cover on most models. Once the 2 pieces of the console cover are connected to each other, pull the sides of the main body piece up to the edge of the console and attach the Velcro tabs that are provided to the (clean and dry) plastic of the console.
4. If you have a center headrest, tuck the fabric below the plastic headrest housing and reattach the headrest.
5. Raise the backrest to its upright position. Lay the lower section of the cover over the seat bottom or slide the lower sleeve over the seat cushion. (This will vary depending on vehicle and whether the seat has under-seat storage.) Push the straps/Velcro through where the backrest and bottom meet and wrap them under the seat cushion. Feed straps under the cushion to corresponding buckles if applicable. Pull the back of cushion cover towards the back of the seat until cover is tight and then either tighten straps or attach Velcro.
6. Depending on model, attach the Velcro tabs on the sides of the cushion to the carpet under the seat or pull drawstring tight and tie to itself. See step 9 in Section A.

Photo A



Photo B



The enclosed installation tool is for your convenience when installing a seat cover. It can be used to tuck the fabric of the seat cover down behind plastic (see Photo A), around the headrest housing (see Photo B), and other areas as needed.